

# Understanding the Tear Film

The tear film is comprised of three layers that protect the surface of the eyes.

## Mucin Layer

The inner layer that helps the eye remain lubricated

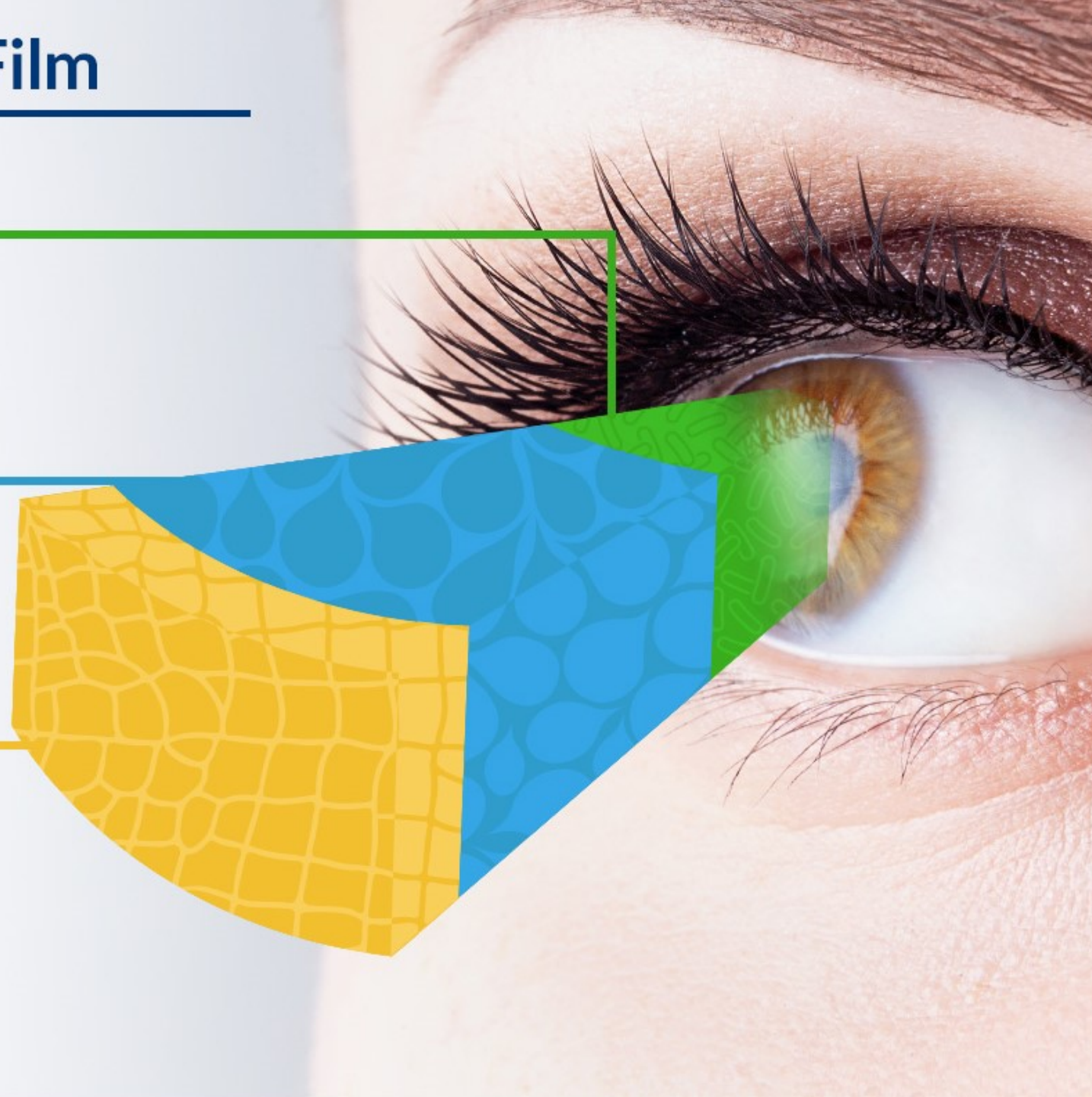
## Aqueous Layer

The middle layer that washes away particles and prevents infection

## Lipid Layer

The outer layer that helps reduce evaporation of natural tears

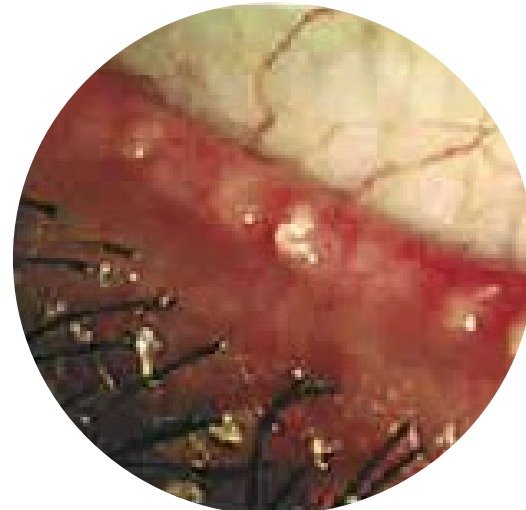
**Issues with tear film layers can result in tear imbalances and dry eyes.**



# Meibomian Gland Dysfunction (MGD)



**Normal Oil**



**MGD**

# Normal Meibomian Gland Structure





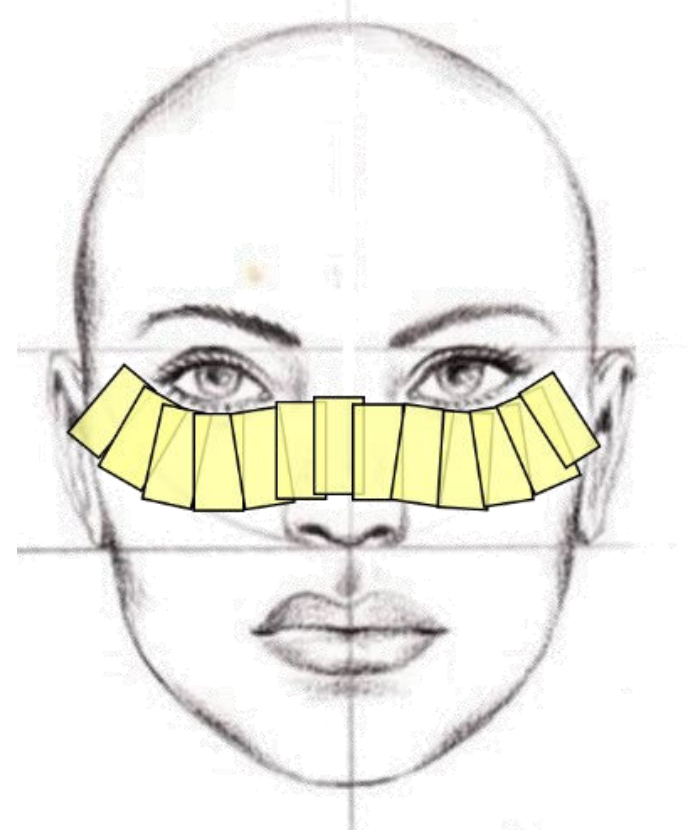
# Mild-Moderate Gland Loss in MGD



# Severe Gland Loss in MGD

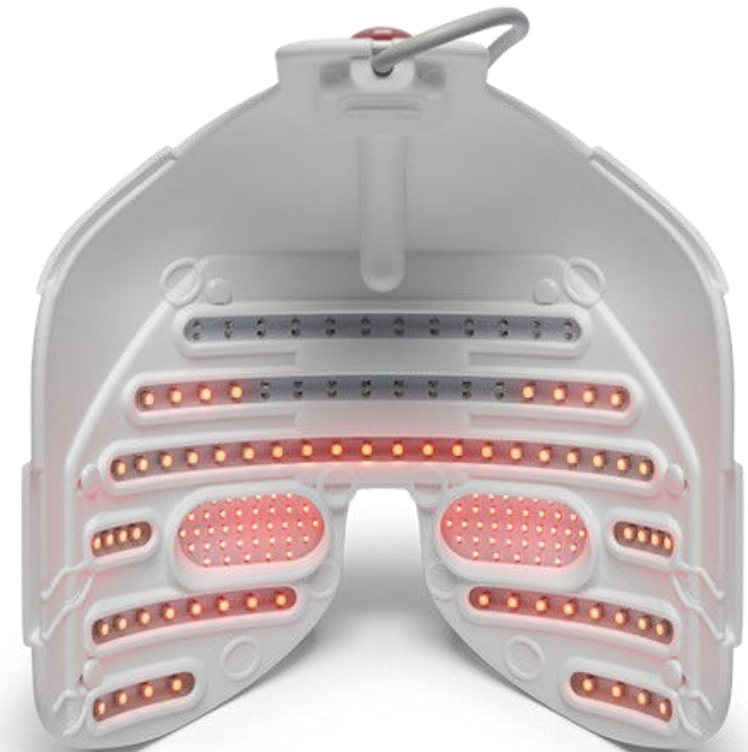


# IPL – Intense Pulsed Light





# LLLT – Low Level Light Therapy



# TearCare





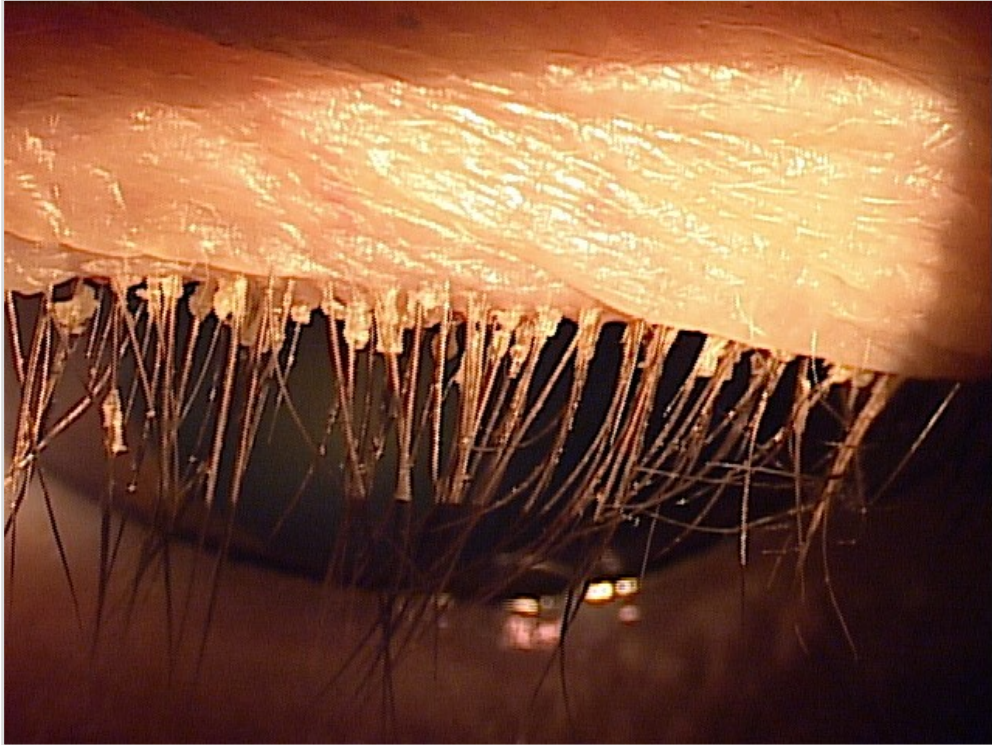
# LipiFlow



# iLux



# Blepharitis



**Demodex Blepharitis**



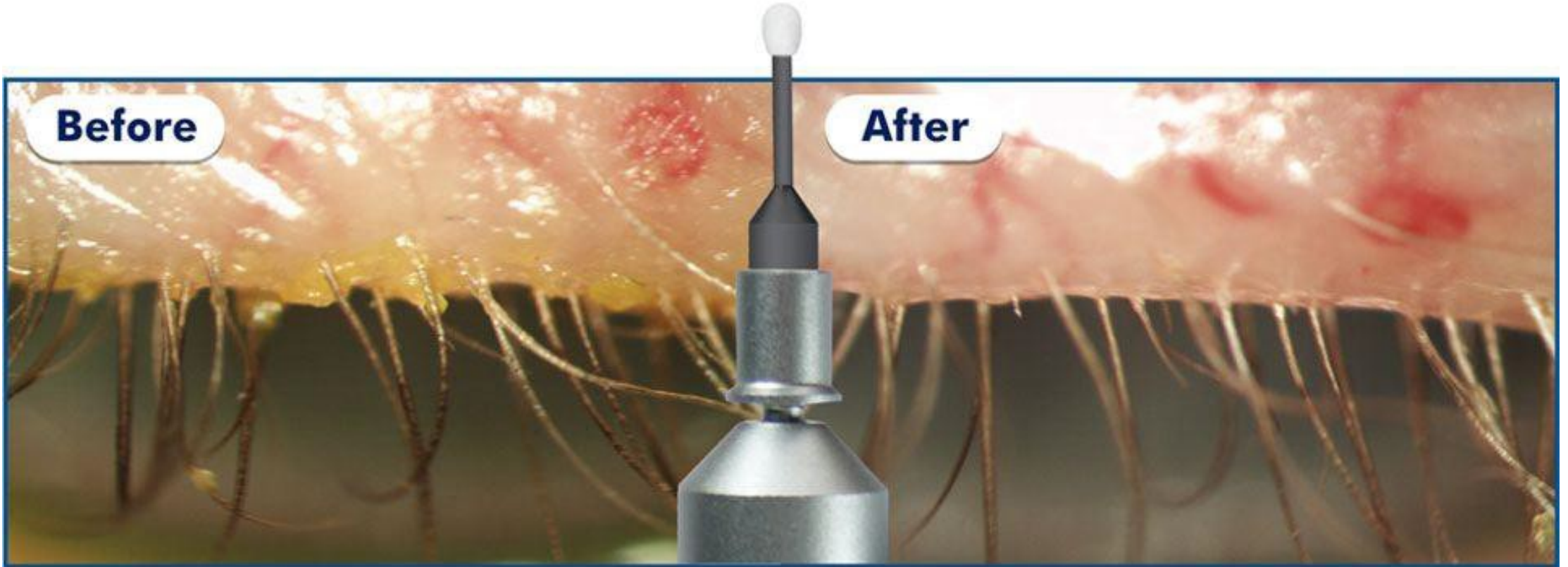
**Staph Blepharitis**



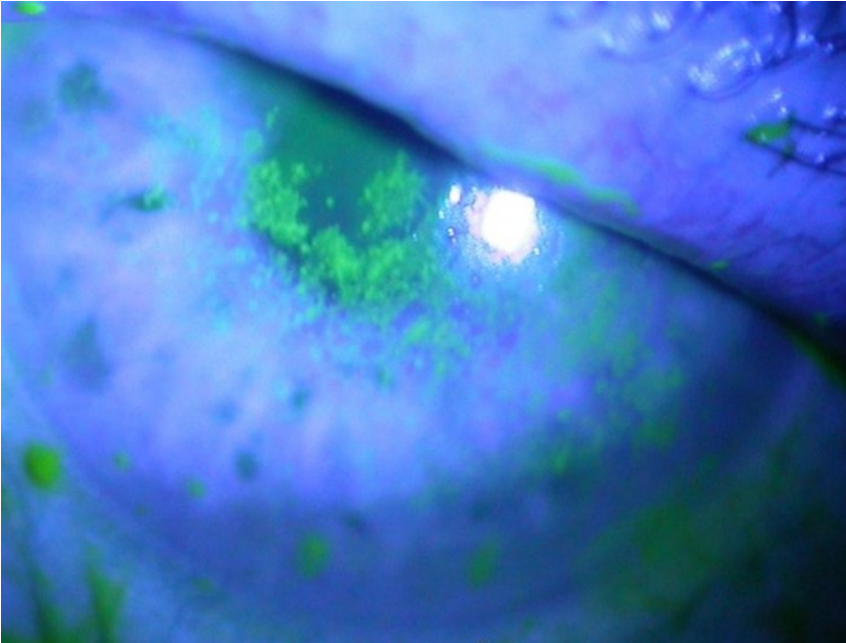
# ZEST Eyelid Exfoliation



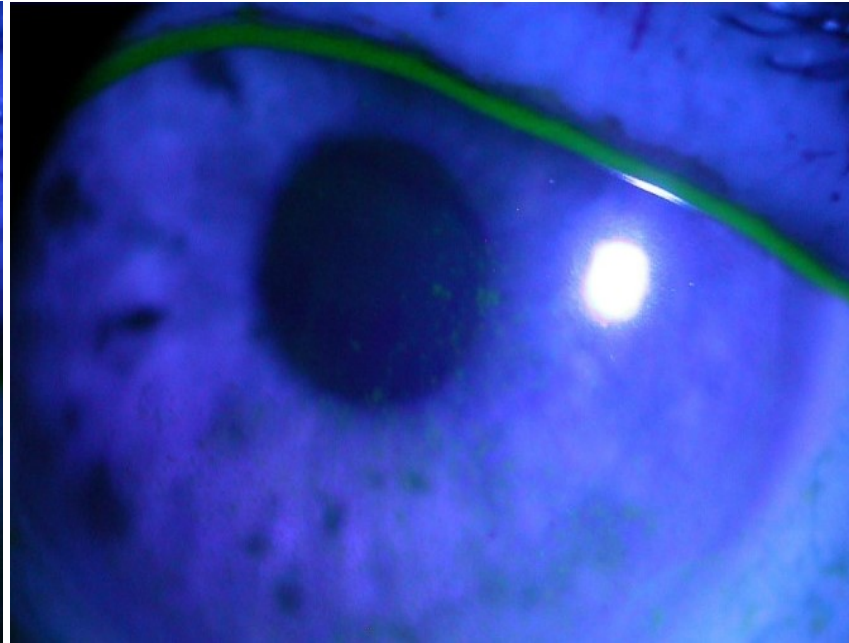
# BlephEx



# Prokera



Before Treatment



After Treatment

